

OBS Plugin & Dockable Controller

User Manual - English

Table of Contents

Chapter 1	System Requirements	2
1.1	System Requirements.....	2
1.2	Software Requirement	2
Chapter 2	Install OBS Plugin & Dockable Controller	3
2.1	Install with Windows 7 / 10.....	3
2.2	Install with Mac	3
Chapter 3	Start Using	4
3.1	Confirm Network Setting.....	4
3.2	Set video source from OBS-Studio	4
3.3	How to use Lumens OBS Plugin to control camera.....	8
3.4	How to use Lumens OBS Dockable to control camera.....	11
Chapter 4	Operation Interface Description	15
4.1	OBS Plugin	15
4.2	OBS Dockable	20
	Copyright Information	22

Chapter 1 System Requirements

1.1 System Requirements

- Windows 7 / 10
- Mac 10.13 or above

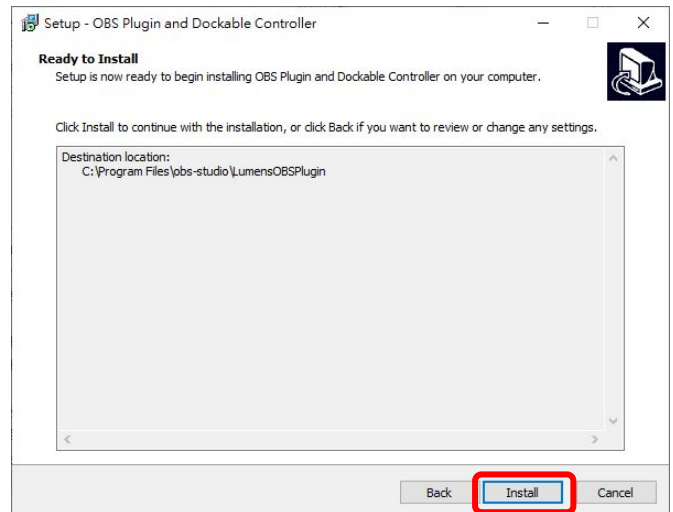
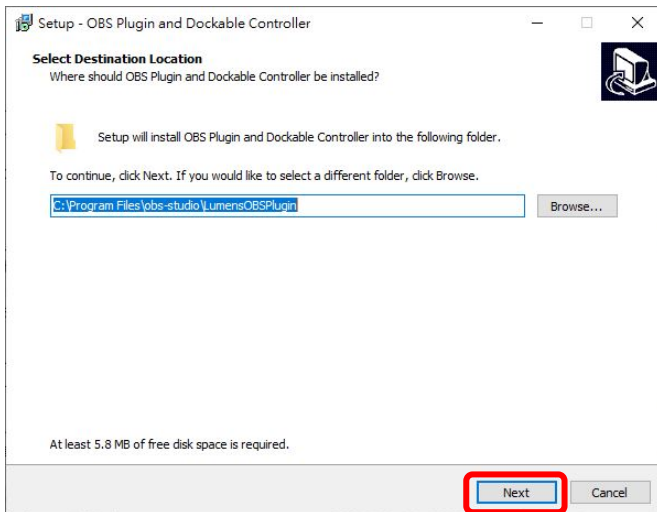
1.2 Software Requirements

- OSB-Studio 25.08 or above

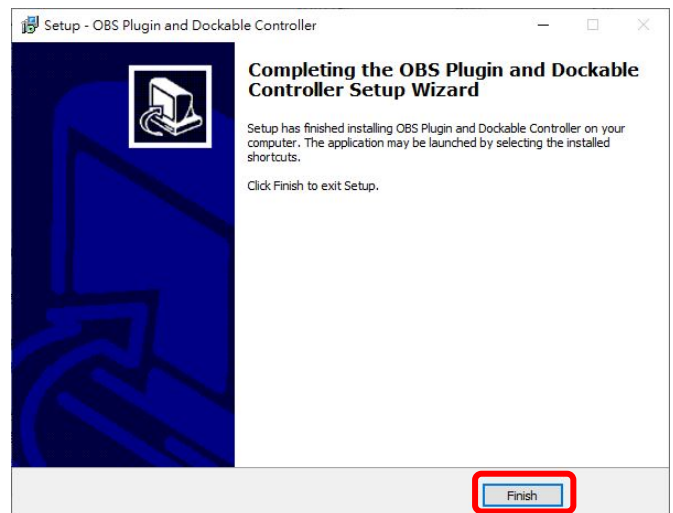
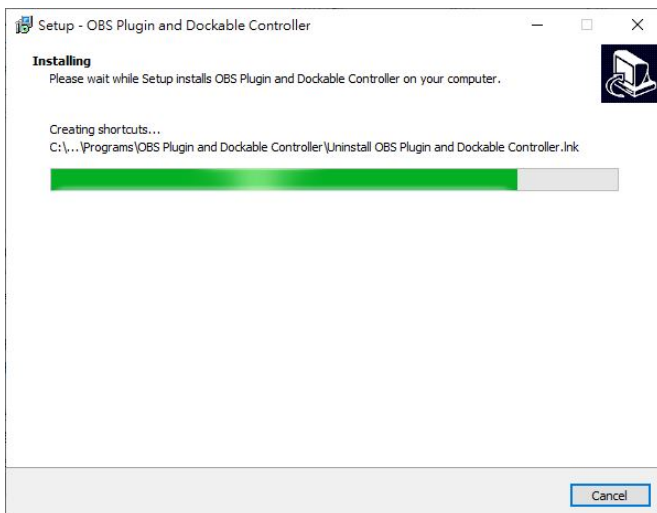
Chapter 2 Install OBS Plugin & Dockable Controller

2.1 Install with Windows 7 / 10

1. Please download **OBS-Studio** software and install it on your computer.
 - Please download **OBS Plugin & Dockable Controller** software from the Lumens website.
2. Extract the file downloaded and then click [**OBS Plugin and Dockable Controller.exe**] to install.
 - The installation wizard will guide you through the process. Please follow the on-screen instructions for the next step.



- When the installation is completed, press [**Finish**] to end the installation.



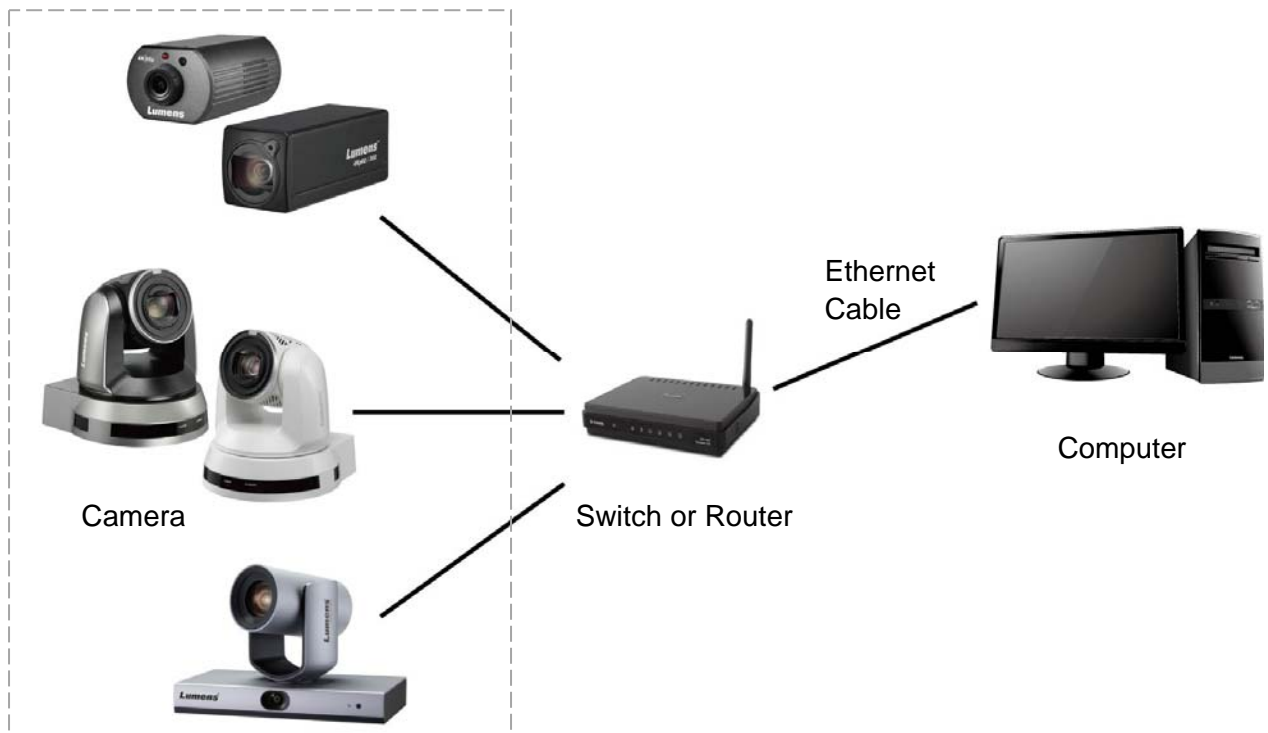
2.2 Install with Mac

1. Please download **OBS-Studio** software and install it on your Mac.
2. Please download **OBS Plugin & Dockable Controller** software from the Lumens website.
3. Click [**OBS Plugin and Dockable Controller.pkg**] to install.

Chapter 3 Start Using

3.1 Confirm Network Setting

To confirm the computer is on the same network segment as the camera.

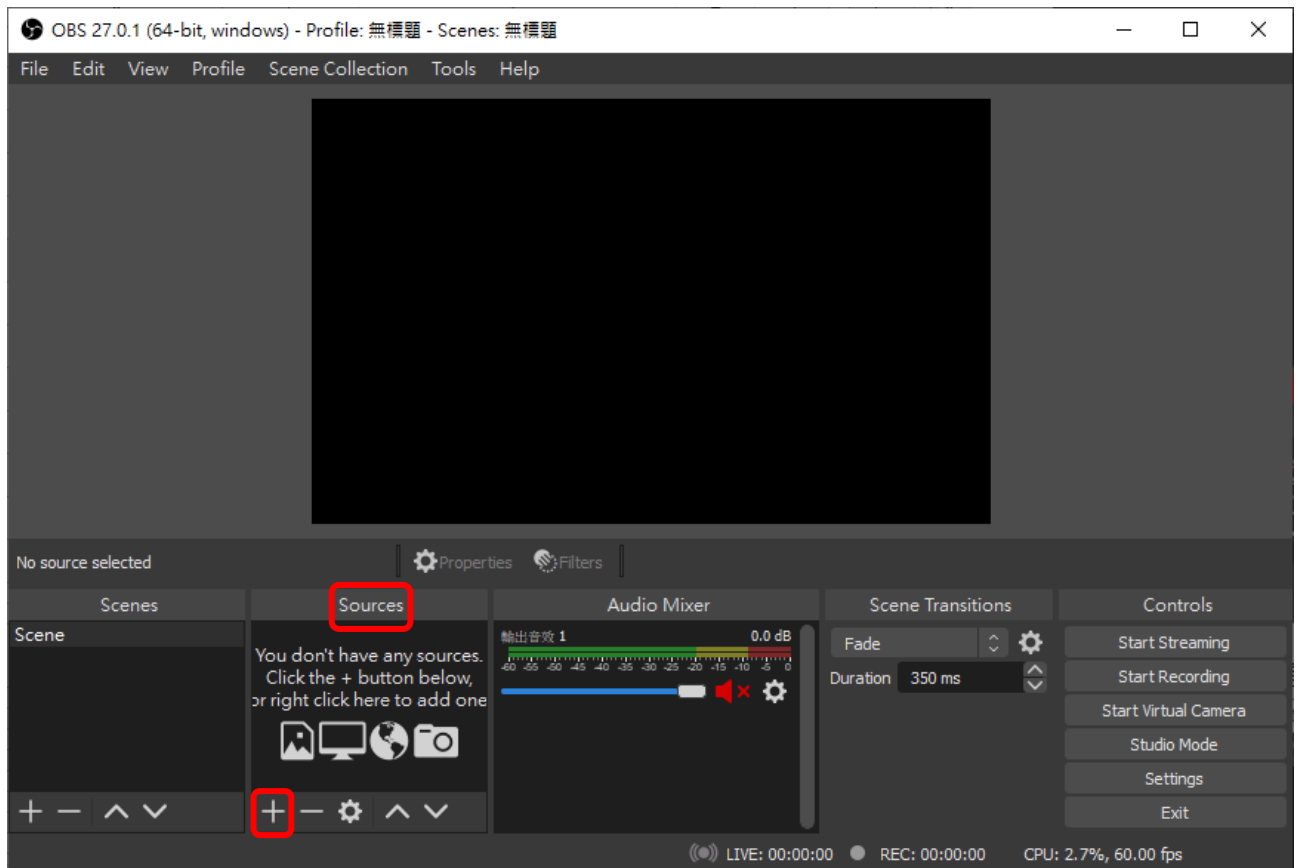


3.2 Set video source from OBS-Studio

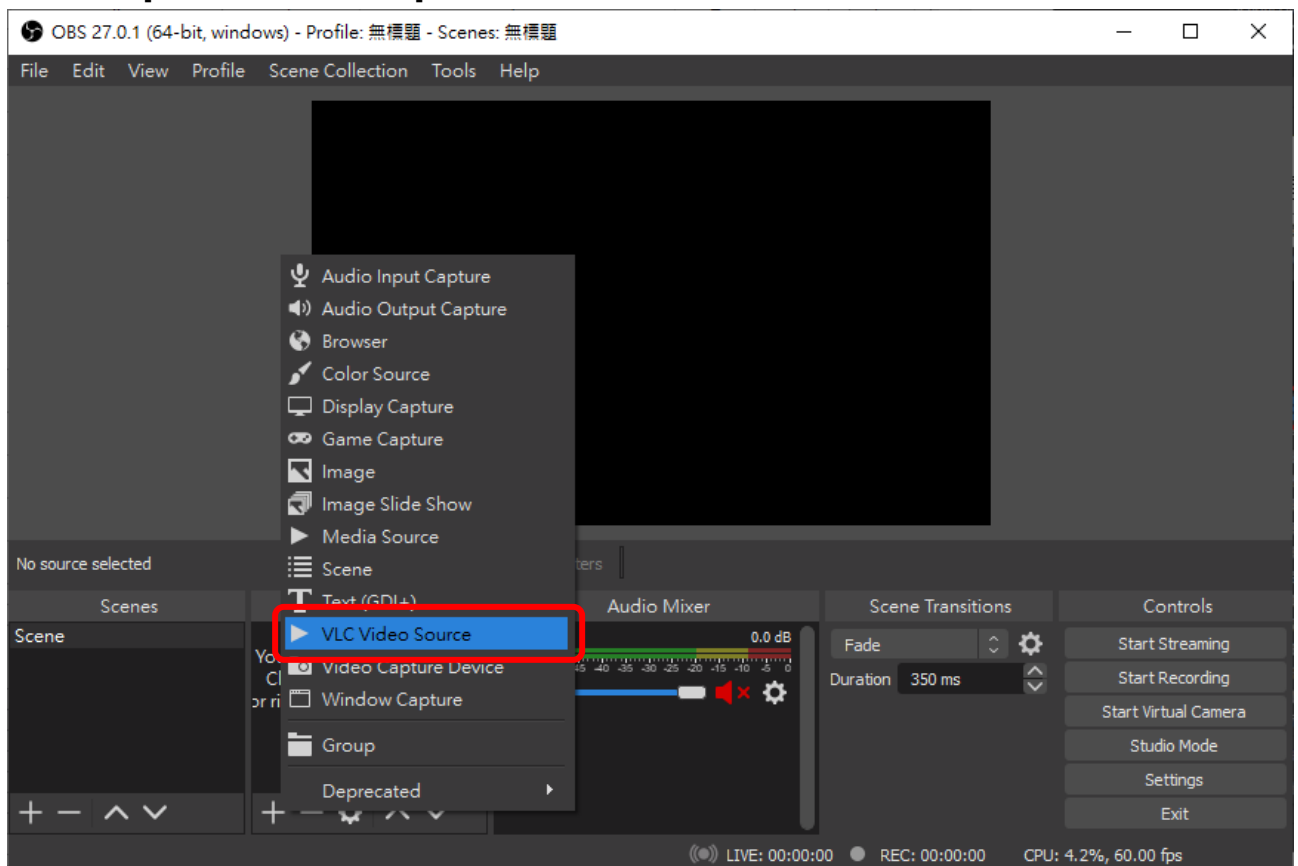
1. Click [**OBS Studio**] icon to open the software.



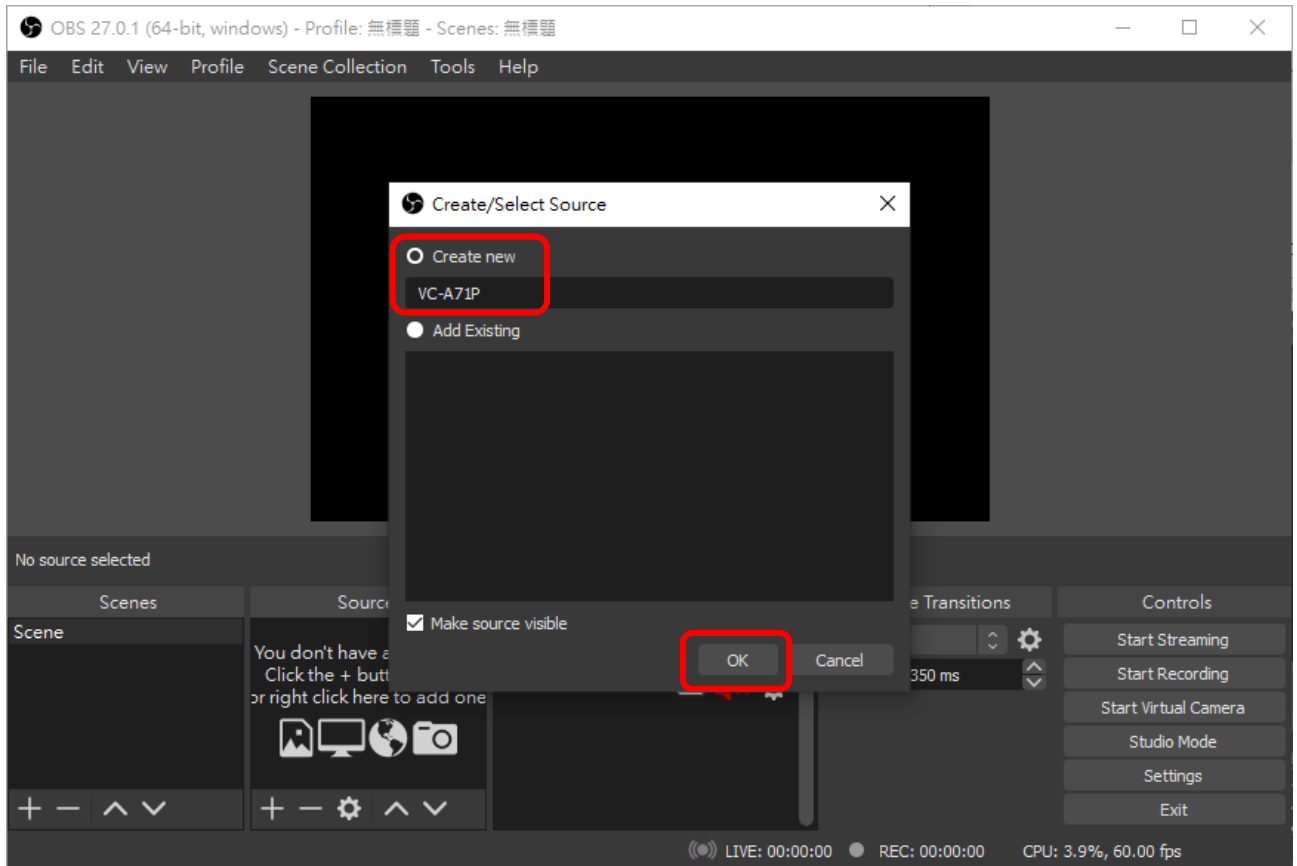
2. Click “+” to add a video source.



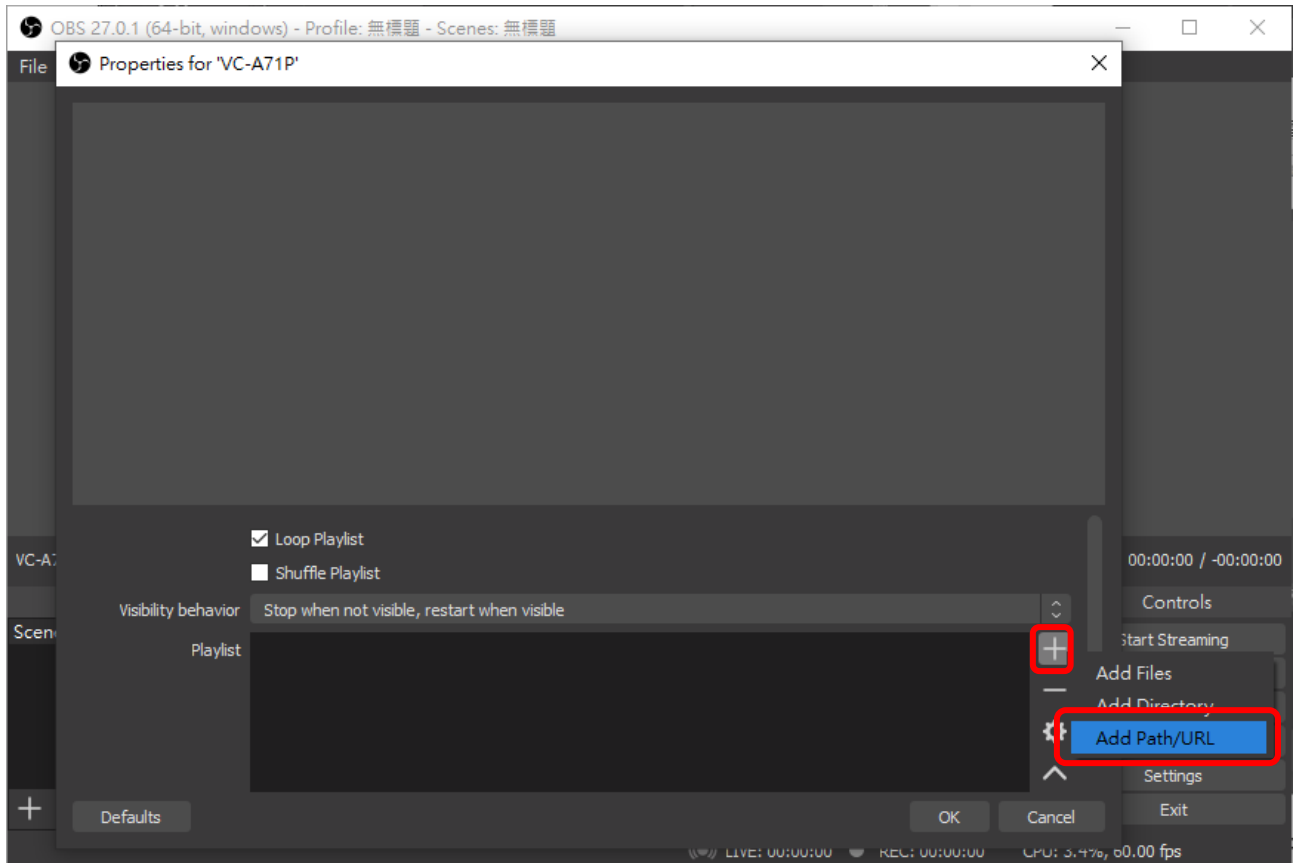
3. Select [VLC Video Source].



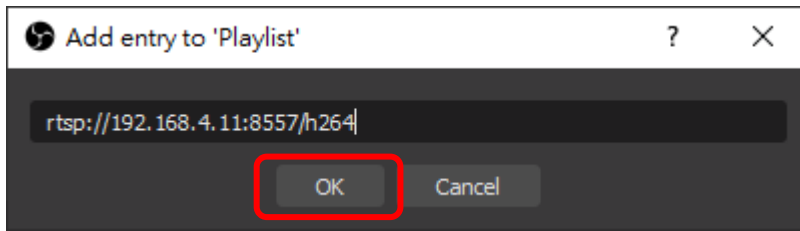
4. Give a name to the video source and click [OK].



5. In Properties page, select “+” then select [Add Path/URL].



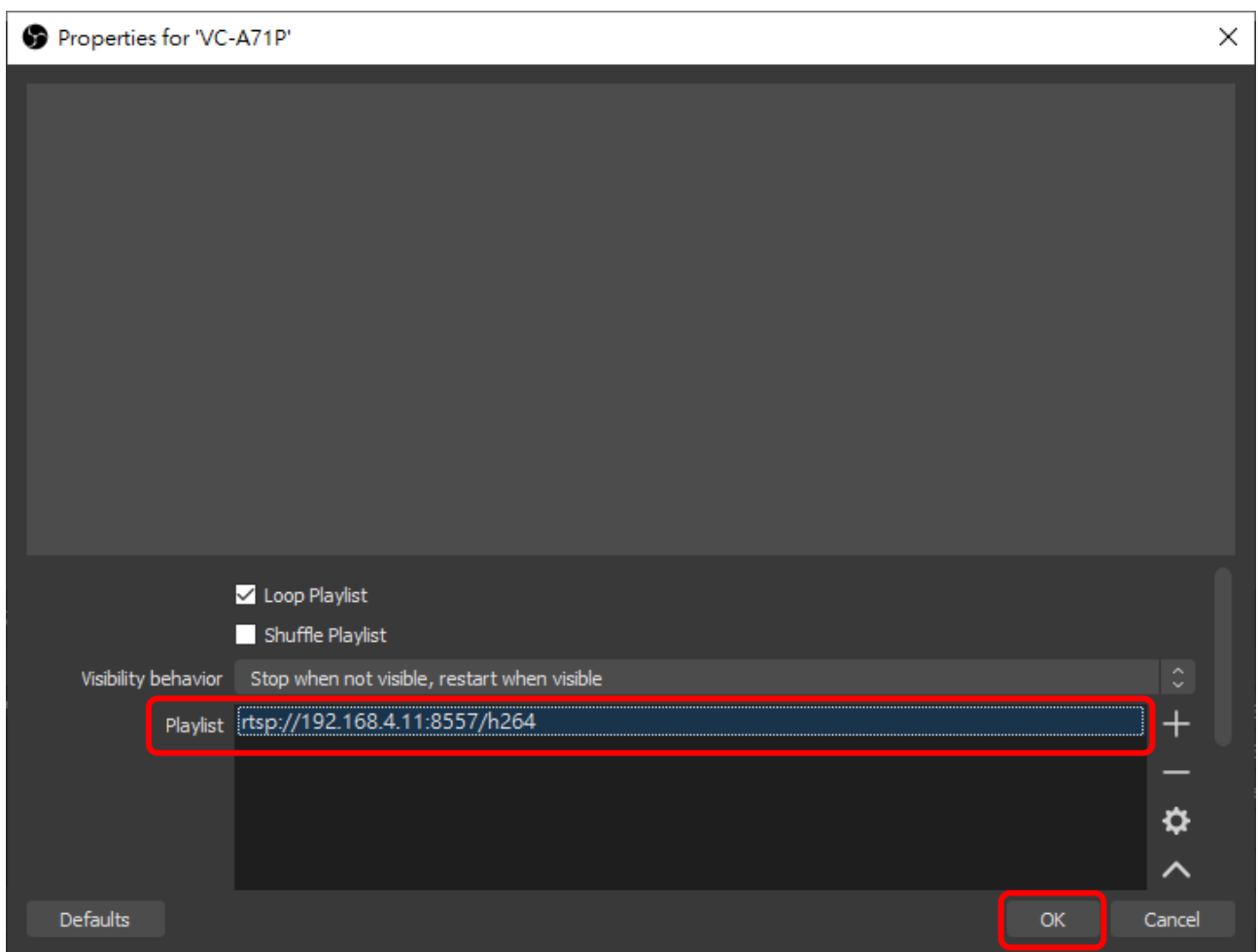
6. Key in the RTSP stream URL then click [OK].



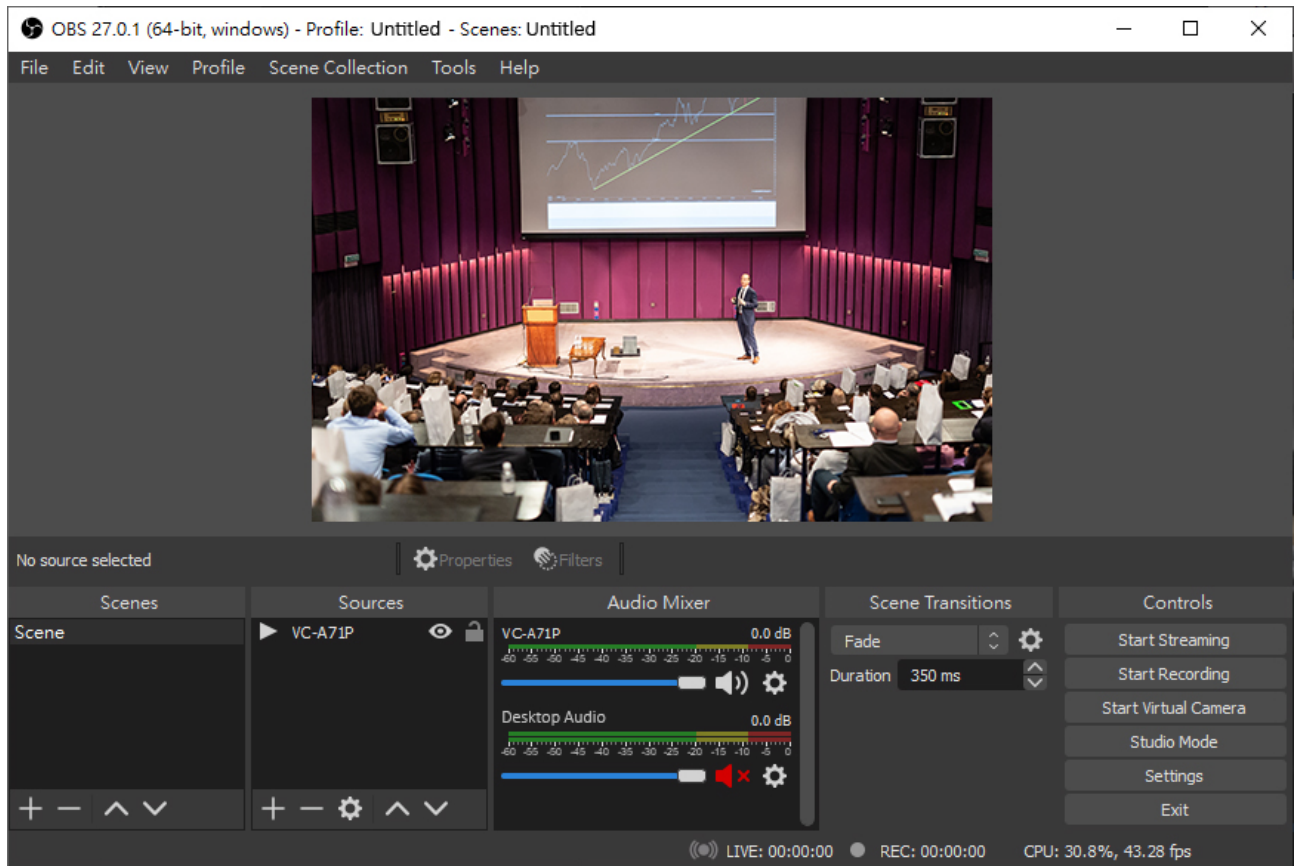
RTSP connection address formats are as follows:

- RTSP Main Streaming (4K@H.265)=> rtsp://[camera IP](#):8554/[hevc](#)
- RTSP Sub1 Streaming (1080P@H.264)=> rtsp://[camera IP](#):8557/[h264](#)
- RTSP Sub2 Streaming (720P@H.264)=> rtsp://[camera IP](#):8556/[h264](#)

7. Select RTSP URL on the Playlist then click [OK].

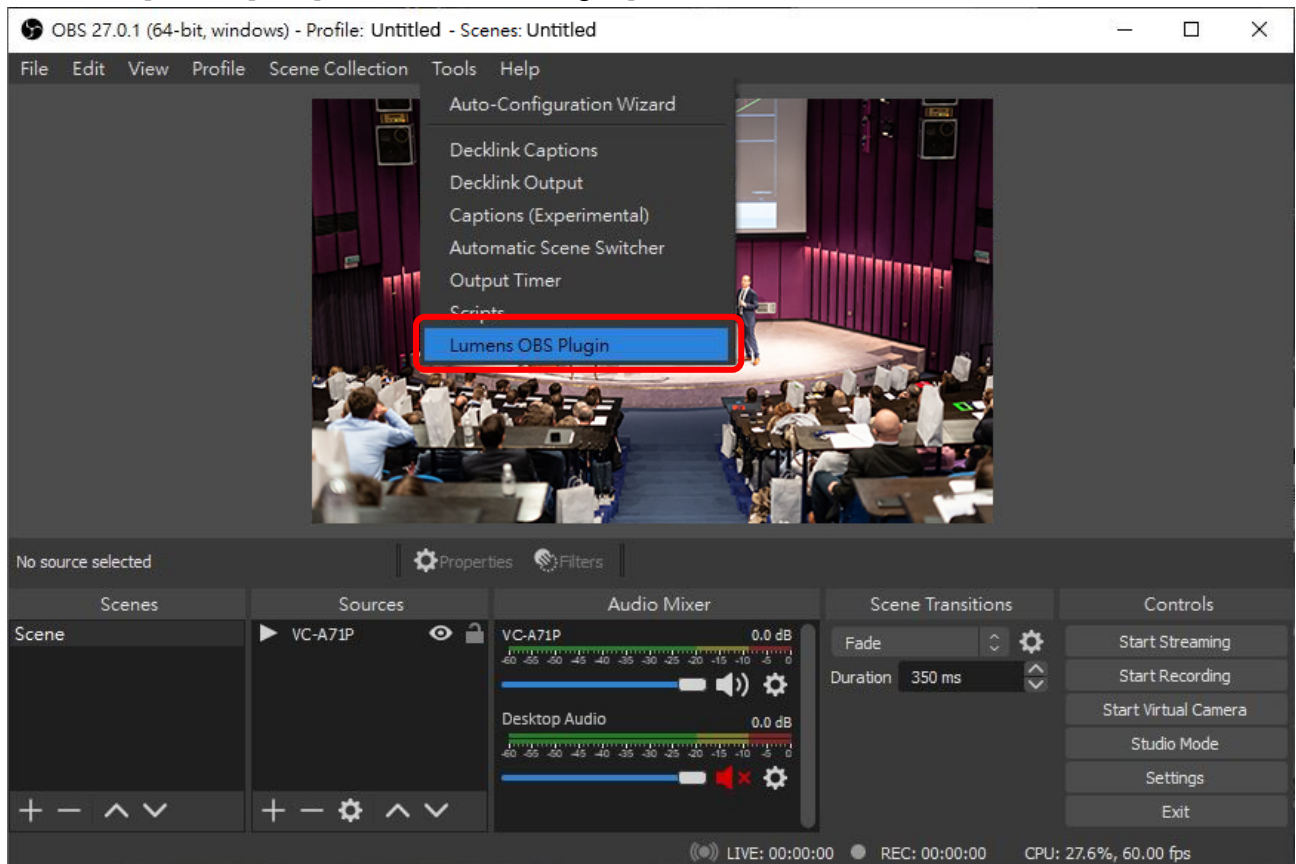


8. The stream will be displayed on the OBS-Studio.



3.3 How to use Lumens OBS Plugin to control camera

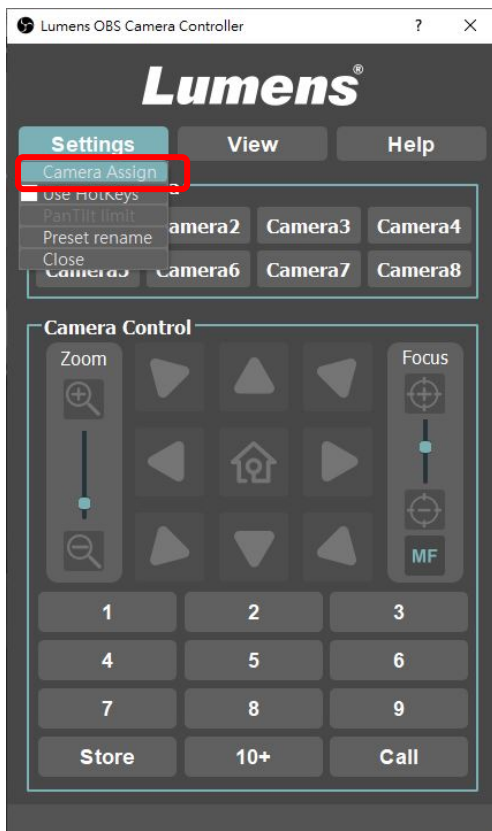
1. Select [Tools] => [Lumens OBS Plugin]



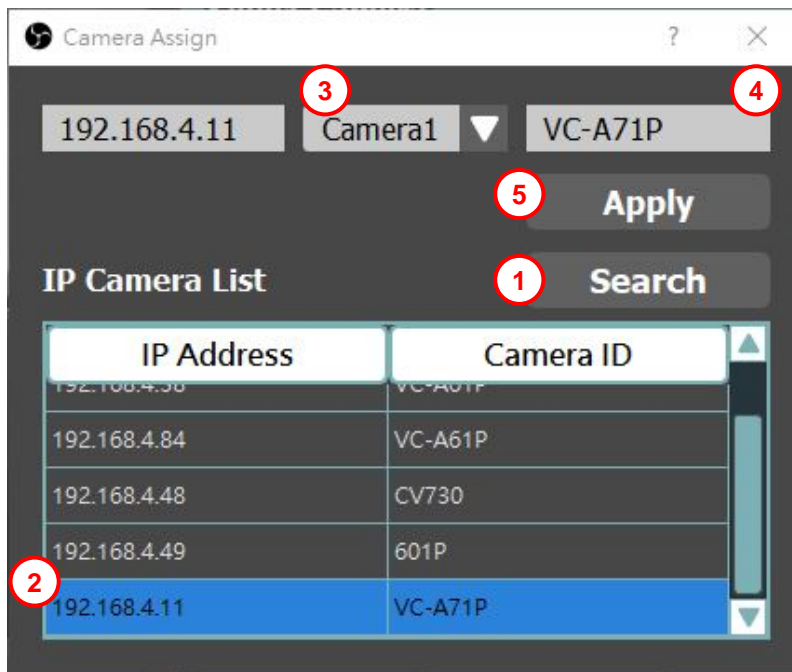
2. Lumens OBS Plugin window will be displayed.



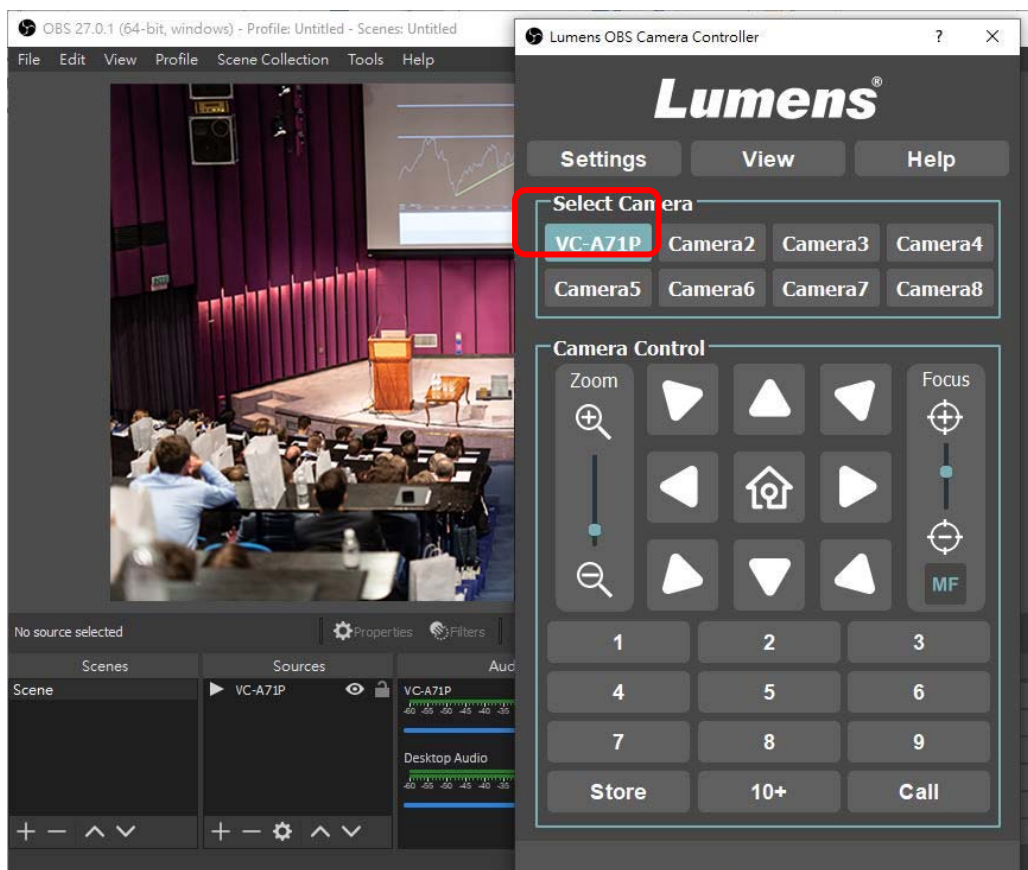
3. Select [Settings] => [Camera Assign]



- ① Press [Search] to find IP cameras from the same network.
- ② Select a Camera you would like to control from IP Camera List.
- ③ Select the Camera No.
- ④ You can change the Camera name.
- ⑤ Click [Apply] and close Camera Assign window.

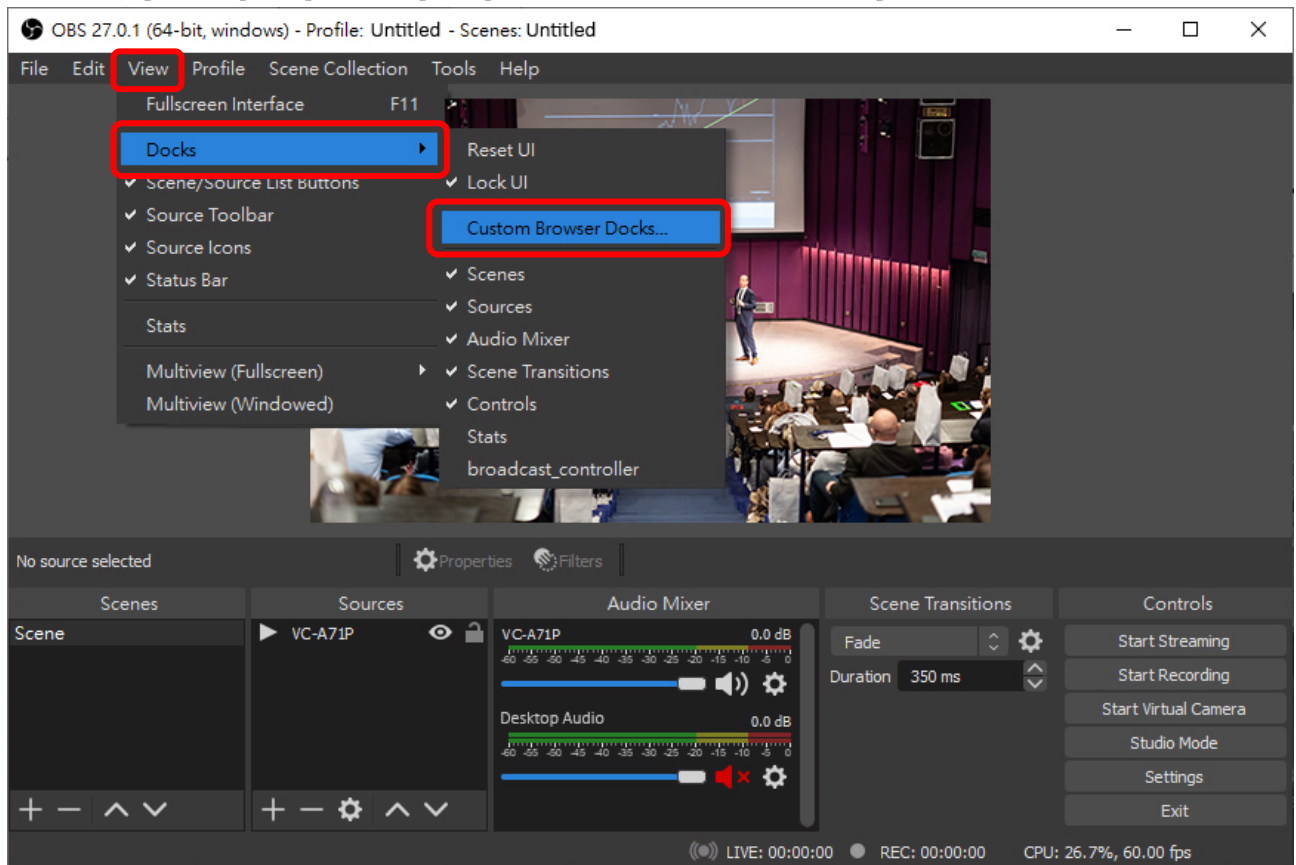


4. Select set Camera from Select Camera tab, Camera Control setting will be enable. Now you can control the camera via Lumens OBS plugin.

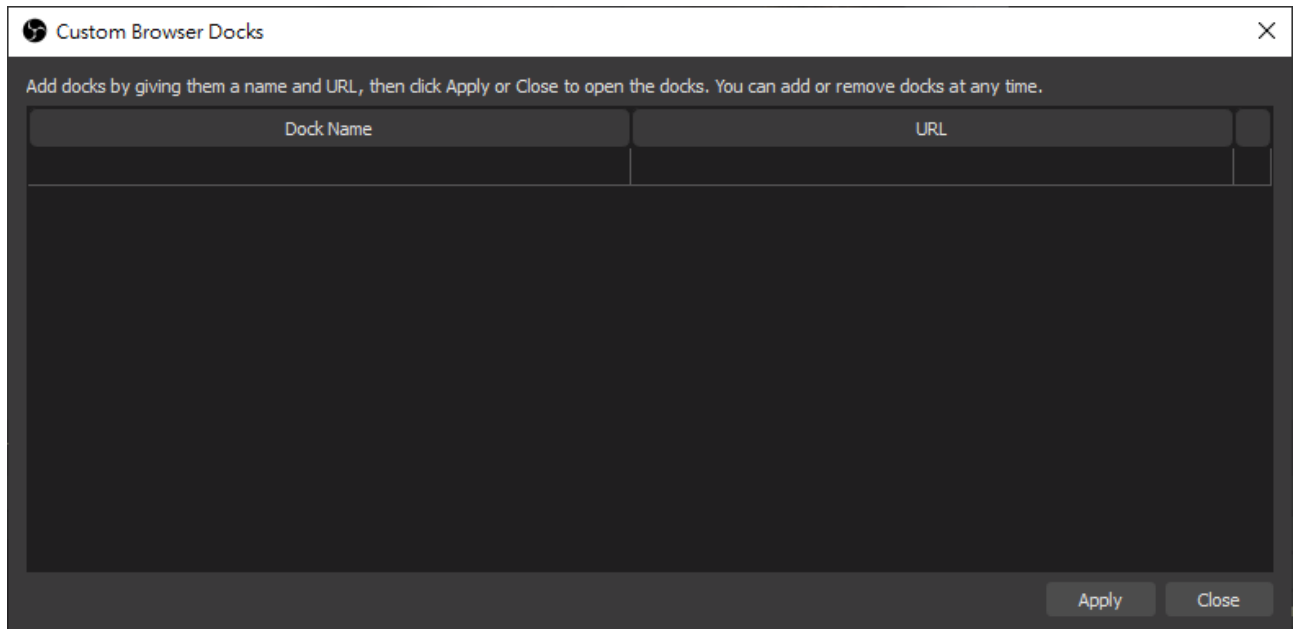


3.4 How to use Lumens OBS Dockable to control camera

1. Select [View] => [Docks] => [Custom Browser Docks...]



2. Custom Browser Docks window will be displayed.

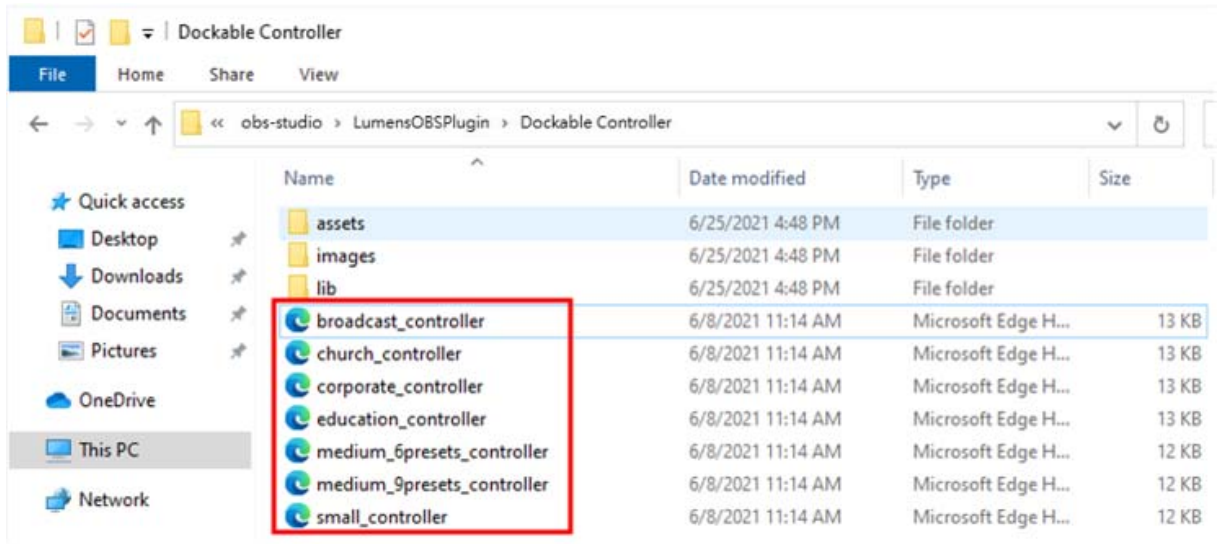


3. Enter the Dock Name & URL

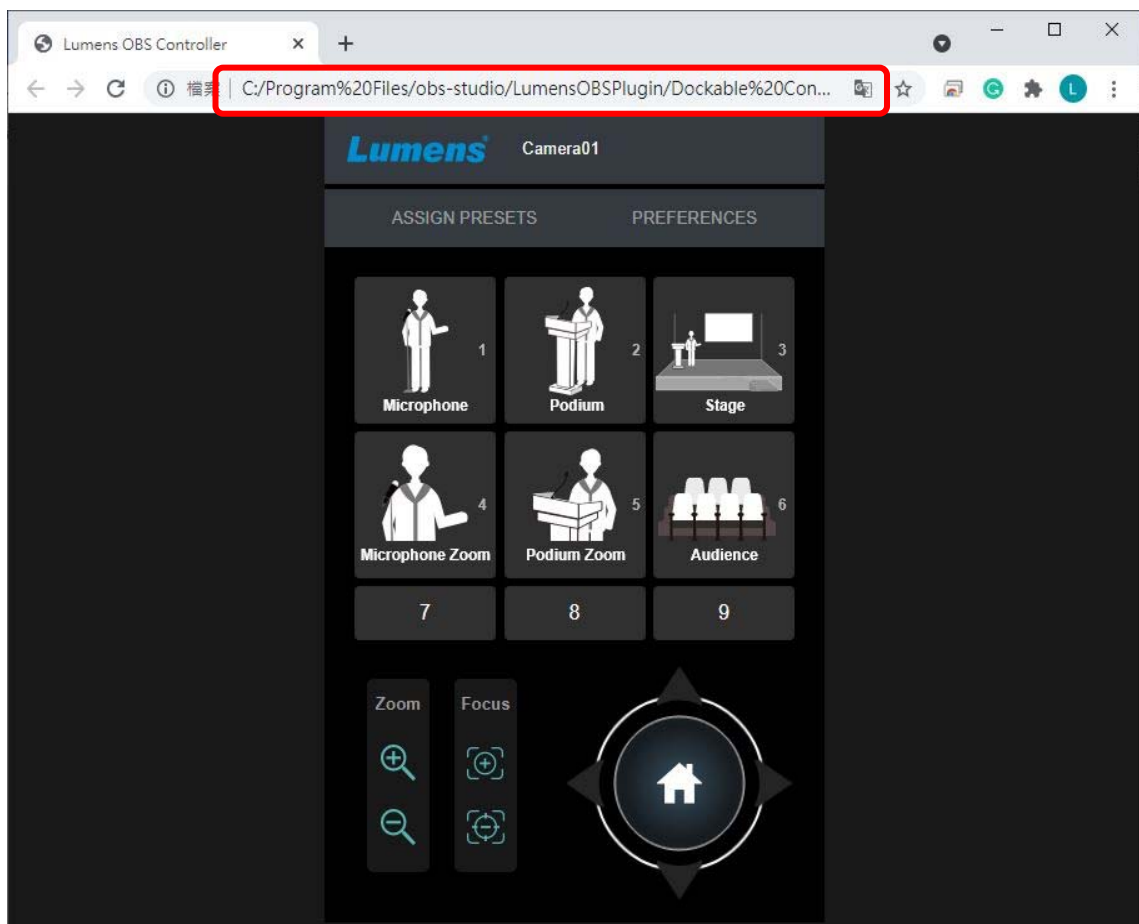
- Dock Name : Give a name to the customized dock.
- URL: Copy the installed link dock sample and paste it to the field.
- For the URL information, please find the installed folder of Dockable Controller.
- Normally the folder would be following path:

C:\Program Files\obs-studio\LumensOBSPugin\Dockable Controller

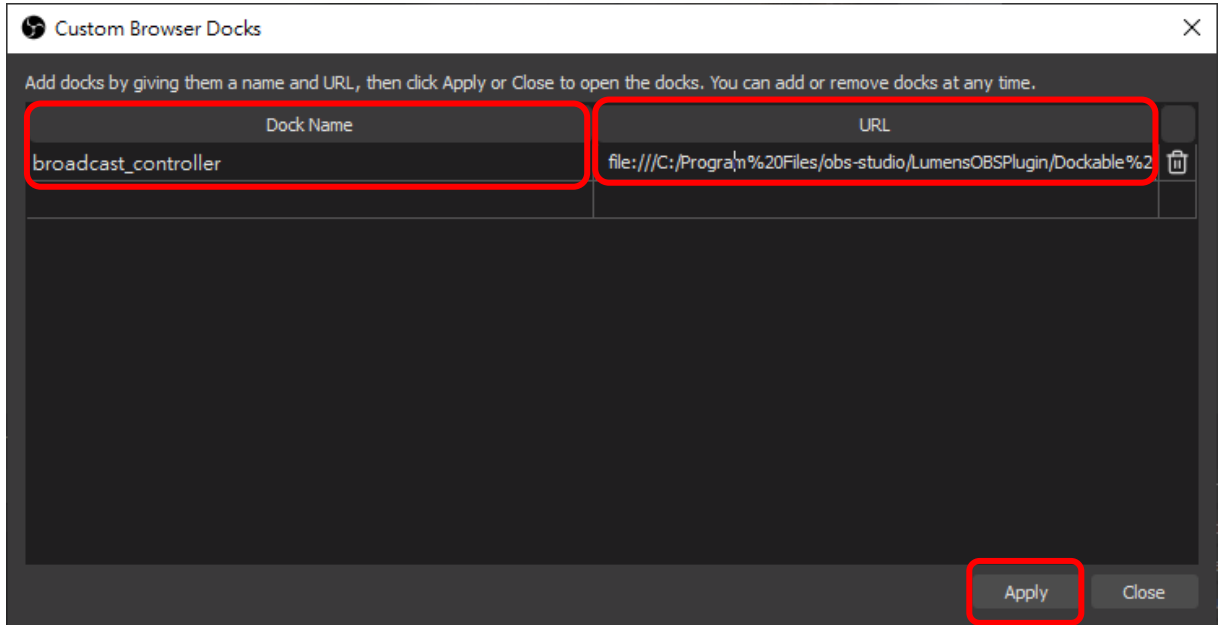
The part circled in the red box below is the dock samples.



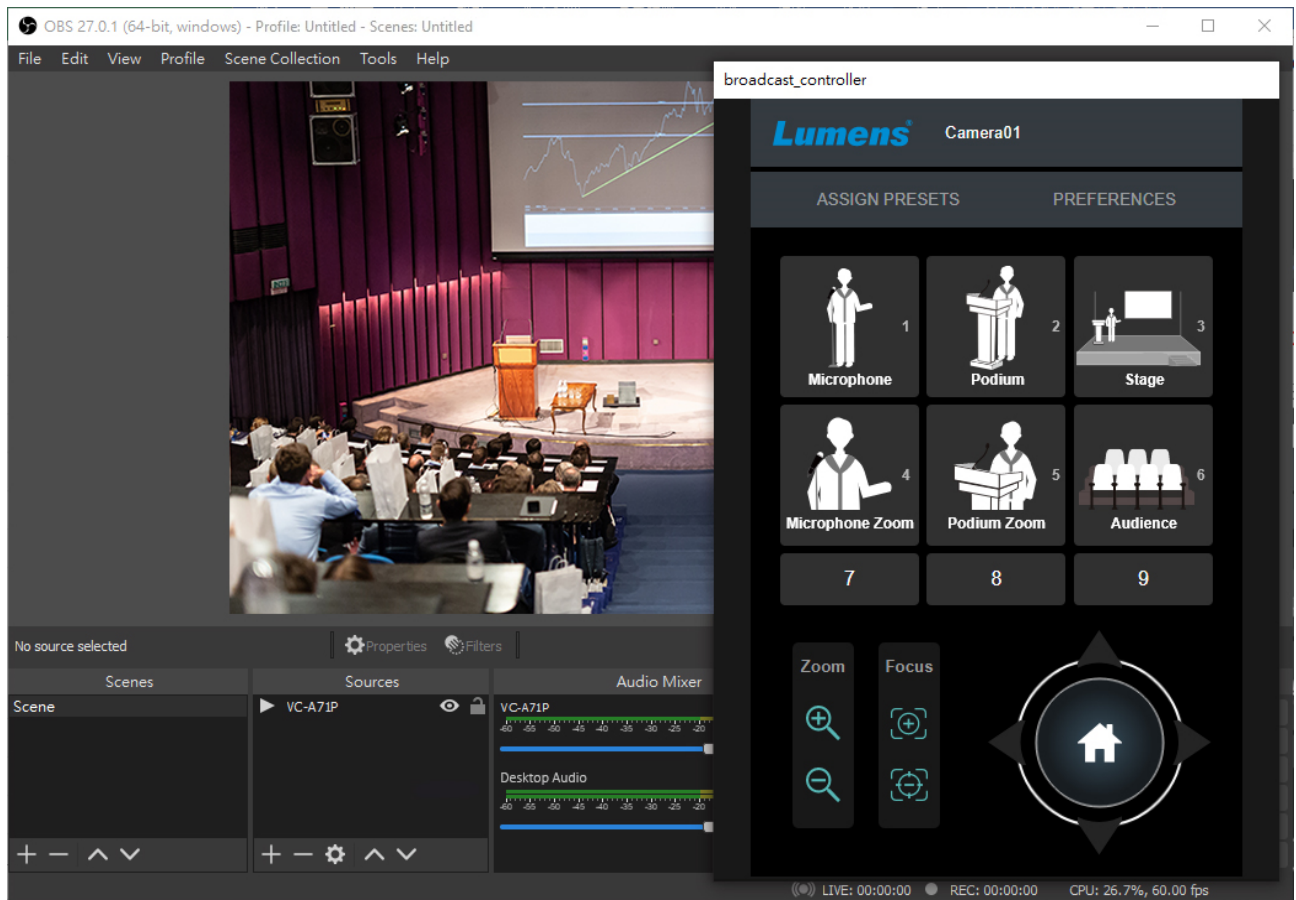
4. Open the dock sample by browser and copy the URL.



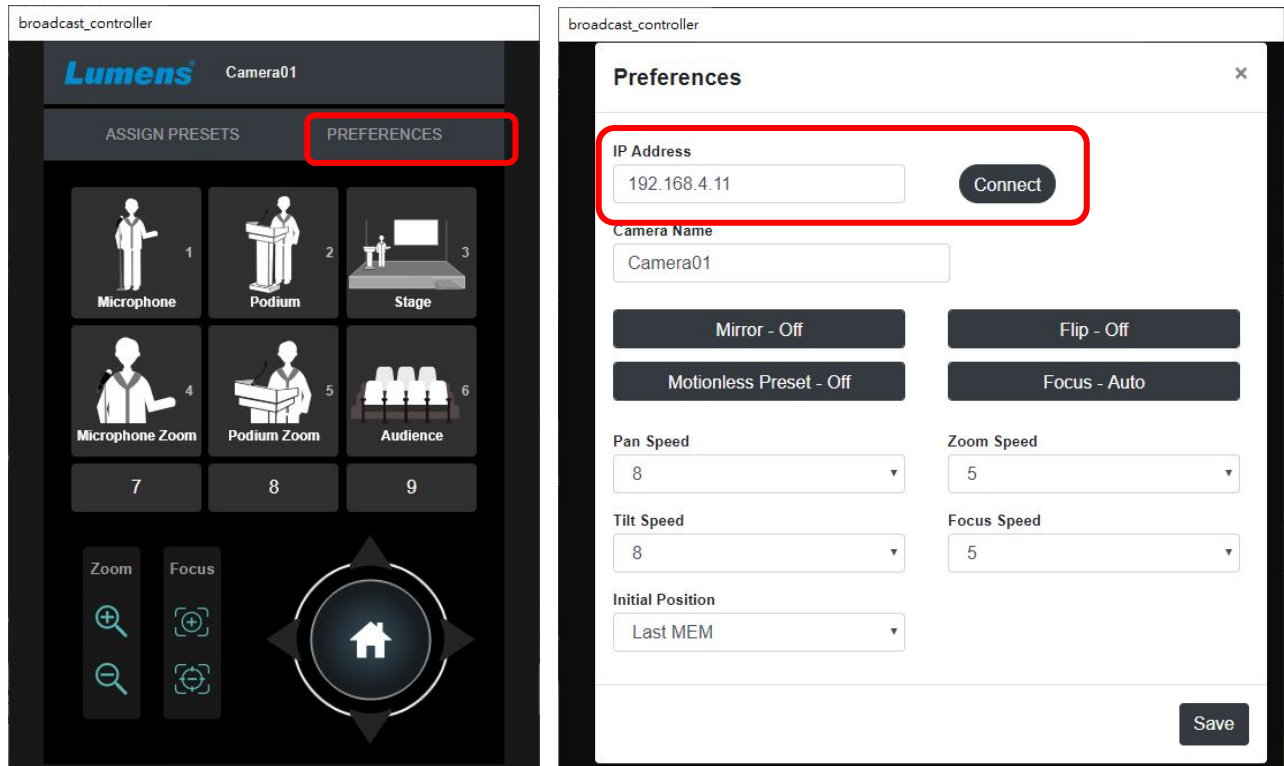
5. Fill in the DockName, paste above URL to custom browser docks window and then click [Apply].



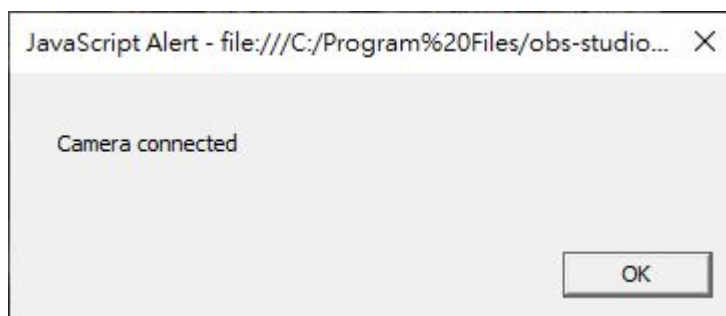
6. Customized dock window will be displayed and you can merge it with OBS-Studio software.



7. Click [PREFEREMCES] to key in the IP address of the camera you would like to control and click [Connect].



8. After connecting, a pops windows will show the camera is connected.

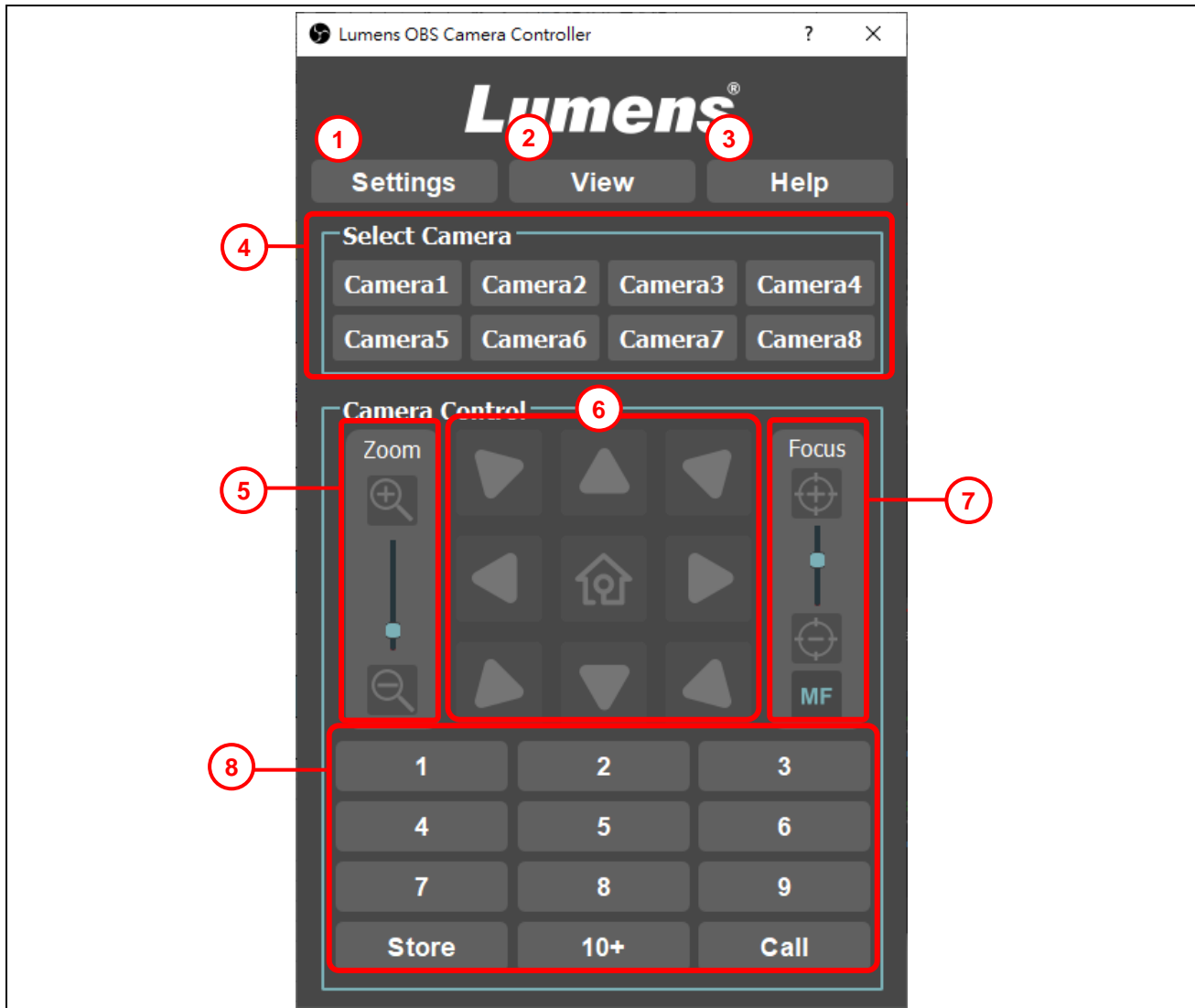


9. Now you can use Lumens dockable to control the IP camera.

Chapter 4 Operation Interface Description

4.1 OBS Plugin

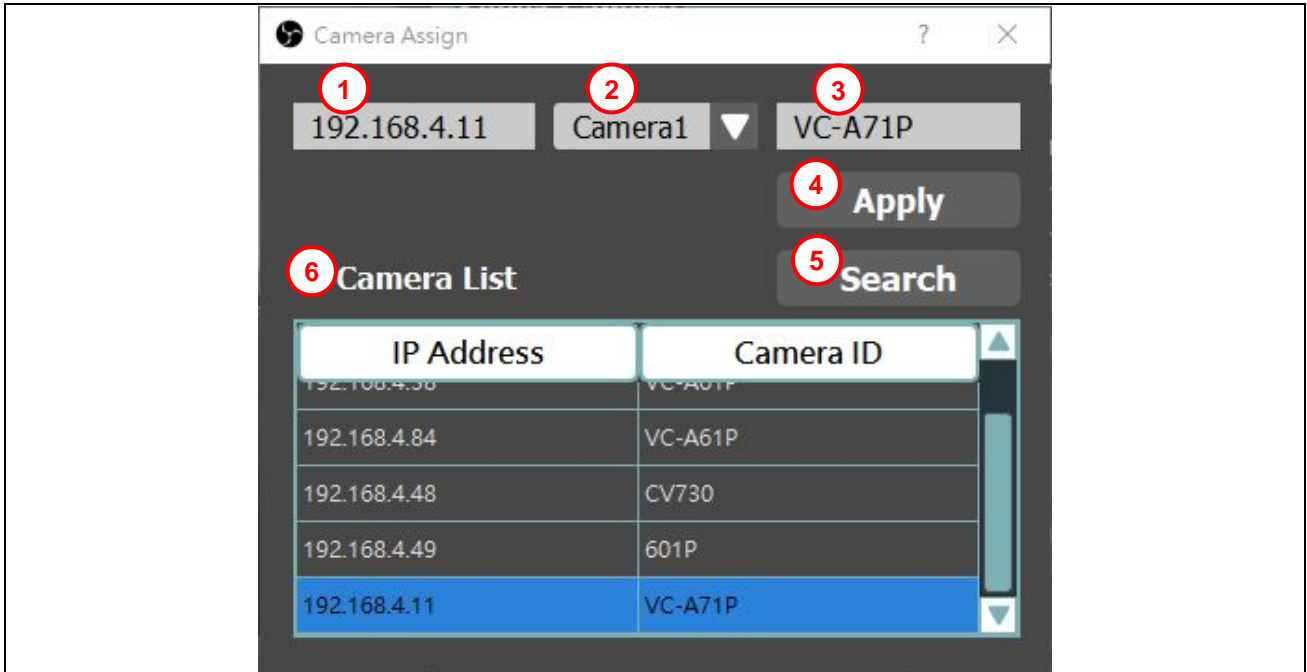
4.1.1 Main



No	Item	Function Descriptions
1	Settings	<p>Settings options:</p> <ul style="list-style-type: none"> ■ Camera assign: Enter the camera setting. Please refer to 4.1.2 Settings-Camera Assign ■ Use HotKeys: When checked, prompt window will pop up: Need to set HotKeys in OBS. You can click [File]=>[Setting]=>[HotKeys] on OBS-studio to set. ■ PanTilt limit: Enter PanTilt limit setting. Please refer to 4.1.3 Settings- PanTilt limit ■ Preset rename: Enter Preset rename setting. Please refer to 4.1.4 Settings- Preset rename ■ Close: Close Lumens OBS Plugin.
2	View	<p>View options:</p> <ul style="list-style-type: none"> ■ Simple mode ■ Advance mode: please refer to 4.1.5 View- Advance mode
3	Help	Show about us information.
4	Select Camera	Select the camera number you want to control. Need to set from [Settings] => [Camera assign] first.

		If the connection fails, a message window will pop up.
5	Zoom ratio	Adjust the zoom-in or zoom-out ratio via the slider bar.
6	Pan / Tilt setting	Adjust the Pan/Tilt position of the camera screen.
7	Focus	Select MF(manual) / AF(automatic) focus. The focusing range is adjustable when the focus mode is set to "Manual".
8	Preset setting	Select the number first and then select [STORE] or [CALL].

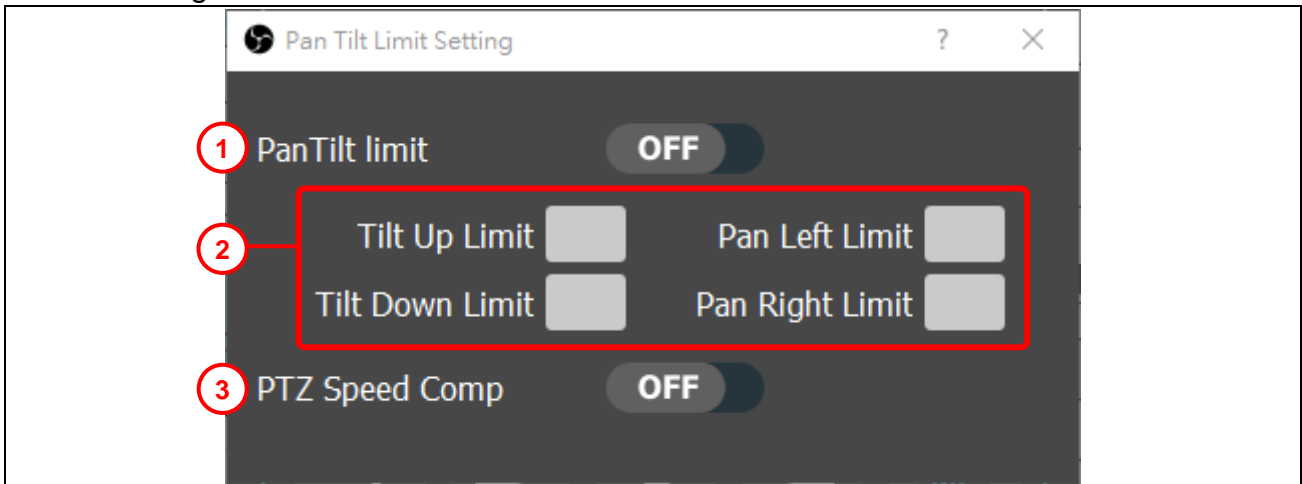
4.1.2 Settings-Camera Assign



No	Item	Function Descriptions
1	IP Address	You can apply the IP of the IP Camera list or manually enter the IP.
2	Camera No.	Select Camera 1~8
3	Camera Name	Manually edit the camera name.
4	Apply	Click to apply settings.
5	Search	Click to search for Lumens PTZ Camera, click in the IP Camera list and IP will fill in the IP Address box.
6	IP Camera List	List the searched Camera IP and Camera ID after click search button.

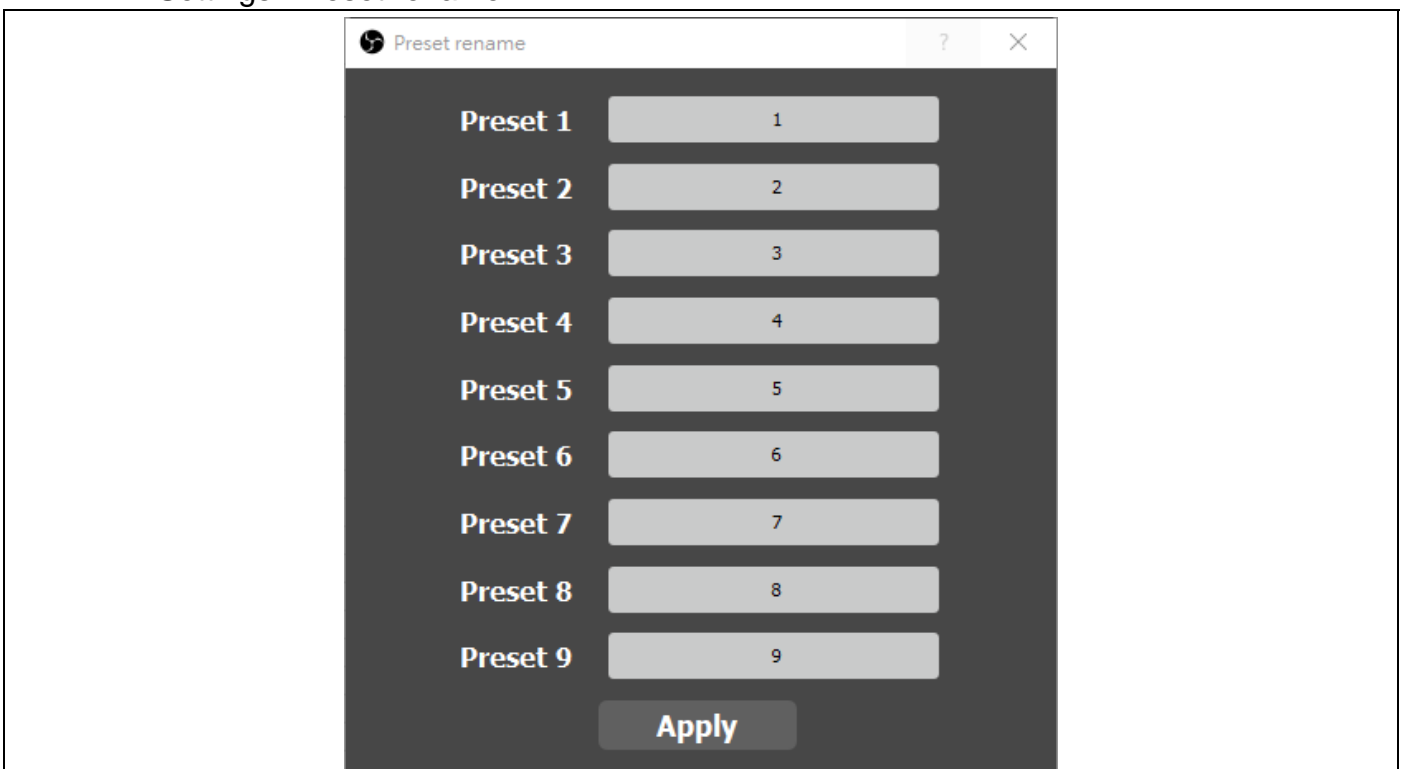
<Remark>Lumens OBS plug-in CANNOT auto-discover Lumens NDI cameras. Please manually add Lumens NDI models via IP address.

4.1.3 Settings- PanTilt limit



No	Item	Function Descriptions
1	PanTilt limit	Switch button to enable/disable PanTilt limit setting.
2	PanTilt limit setting	Set PanTilt limit position.
3	PTZ Speed Comp	Switch button to enable/disable the Pan/Tilt speed vary with the position of the Zoom. <Caution> Don't support VC-A50P and VC-BC series.

4.1.4 Settings- Preset rename



Descriptions

You can edit the Preset name and click [Apply] to save settings.

4.1.5 View- Advance mode



No	Item	Function Descriptions																				
1	PTZF Speed	Adjust the moving speed of Pan/Tilt/Zoom/Focus/Preset.																				
2	Exposure	<ul style="list-style-type: none"> ■ Exposure Mode: Select exposure mode (Auto/Manual) ■ Shutter speed: The shutter speed is adjustable when the exposure mode is set to "Manual". ■ Iris: The size of aperture is adjustable when the exposure mode is set to "Manual". ■ Gain: The gain limit is adjustable when the exposure mode is set to "Manual". ■ Scene Mode: Select Scene mode(Low Light/Indoor/Backlight/Motion) <table border="1"> <thead> <tr> <th>Scene mode</th> <th> Low Light</th> <th> Indoor</th> <th> Back Light</th> <th> Motion</th> </tr> </thead> <tbody> <tr> <td>Shutter speed</td> <td>1/30(1/25)</td> <td>1/60(1/50)</td> <td>1/120</td> <td>1/180</td> </tr> <tr> <td>Iris</td> <td>F2.0</td> <td>F3.2</td> <td>F4.5</td> <td>F3.2</td> </tr> <tr> <td>Gain</td> <td>33dB</td> <td>24dB</td> <td>21dB</td> <td>27dB</td> </tr> </tbody> </table> <p><Remark>VC-A50P does not support Gain</p>	Scene mode	Low Light	Indoor	Back Light	Motion	Shutter speed	1/30(1/25)	1/60(1/50)	1/120	1/180	Iris	F2.0	F3.2	F4.5	F3.2	Gain	33dB	24dB	21dB	27dB
Scene mode	Low Light	Indoor	Back Light	Motion																		
Shutter speed	1/30(1/25)	1/60(1/50)	1/120	1/180																		
Iris	F2.0	F3.2	F4.5	F3.2																		
Gain	33dB	24dB	21dB	27dB																		
3	White Balance	<ul style="list-style-type: none"> ■ White Balance Mode: Select the White Balance mode. <ul style="list-style-type: none"> ➢ Auto (4000K~7000K) ➢ Indoor (3200K) ➢ Outdoor (5800K) 																				

		<ul style="list-style-type: none"> ➤ One Push ➤ Manual (R Gain +/- ; B Gain +/-) ■ R/B Gain: Manually adjust blue/red gain value. ■ One Push: One push WB will be trigger when the white balance mode is set to “One Push”.
4	Image	<ul style="list-style-type: none"> ■ Image Mode: Select the Image mode (Default/Custom) When the image mode is set to Custom, following items can be adjusted ■ Sharpness: Adjust the sharpness of the image. ■ Saturation: Saturation adjustment of the image. ■ Hue: Adjust the hue. ■ Gamma: Gamma Level adjustment. ■ Dig-Effect: Set the mode at which the image is turned. (OFF/MIRROR/FLIP/MIRROR+FLIP)

4.2 OBS Dockable

4.2.1 Control window



No	Item	Function Descriptions
1	Camera Name	Show the camera name you are controlling.
2	ASSIGN PRESETS	<p>Move the camera into the position you want and click the preset button you want to assign.</p> <p>Assign Presets ×</p> <p>1. Move the camera into the position you want 2. Click the preset button you want to assign</p> <div style="display: flex; flex-wrap: wrap; justify-content: space-around;"> <div style="border: 1px solid black; padding: 2px 10px; margin: 2px;">1</div> <div style="border: 1px solid black; padding: 2px 10px; margin: 2px;">2</div> <div style="border: 1px solid black; padding: 2px 10px; margin: 2px;">3</div> <div style="border: 1px solid black; padding: 2px 10px; margin: 2px;">4</div> <div style="border: 1px solid black; padding: 2px 10px; margin: 2px;">5</div> <div style="border: 1px solid black; padding: 2px 10px; margin: 2px;">6</div> <div style="border: 1px solid black; padding: 2px 10px; margin: 2px;">7</div> <div style="border: 1px solid black; padding: 2px 10px; margin: 2px;">8</div> <div style="border: 1px solid black; padding: 2px 10px; margin: 2px;">9</div> </div> <p style="text-align: right; margin-top: 10px;">Done</p>
3	PREFERENCES	Please refer to 4.2.2 PREFERENCES
4	Preset Controller	Press the button to execute Preset Recall.
5	Zoom	Adjust the zoom-in or zoom-out.
6	Focus	Adjust the focus range.
7	Pan/Tilt/Home	Adjust the Pan/Tilt/Home position of the camera screen.

4.2.2 PERFERENCES

No	Item	Function Descriptions
1	IP Address	Enter the IP address the Camera and click [Connect] button.
2	Camera Name	<p>Modify the camera name. (Default: Camera01)</p> <ul style="list-style-type: none"> ■ Camera names are limited to 1 - 12 characters. ■ Please use a camera name by mixing uppercase and lowercase letters or numbers. Do not use “/” and “space” or special symbols.
3	Setting buttons	<p>Press buttons to switch the mode.</p> <ul style="list-style-type: none"> ■ Mirror- On/Off ■ Filp- On/Off ■ Motionless Preser- On/Off ■ Focus- Manual/Auto
4	Speed	Adjust the moving speed of Pan/Tilt/Zoom/Focus.
5	Initial Position	Select the initial position. (Last MEM / 1st Preset)

Copyright Information

Copyrights © Lumens Digital Optics Inc. All rights reserved.

Lumens is a trademark that is currently being registered by Lumens Digital Optics Inc.

Copying, reproducing or transmitting this file is not allowed if a license is not provided by Lumens Digital Optics Inc. unless copying this file is for the purpose of backup after purchasing this product.

In order to keep improving the product, the information in this file is subject to change without prior notice.

To fully explain or describe how this product should be used, this manual may refer to names of other products or companies without any intention of infringement.

Disclaimer of warranties: Lumens Digital Optics Inc. is neither responsible for any possible technological, editorial errors or omissions, nor responsible for any incidental or related damages arising from providing this file, using, or operating this product.